



Parks and Trails

General information

Name of the Park/Trail	BIOLAKE OF CAVA VALSORA
Address	"CHIOSCHETTO DI CAVA VALSORA" VIA DEI COLLI, PASSO DEL VESTITO
City	MASS
Contacts	For info and reservations: Tel: +39 335 1214775 E-mail: info@cavavalsora.com
Website	www.cavavalsora.com
WCAG 2.1 compliant accessible website	NO

TESTED BY: [Handy Superabile Social Promotion Association](#) in 2024

Please note The following information refers to the date of verification shown at the bottom of each sheet. **The Association** is not responsible for any significant changes made by the property after the visit.

Summary

Parks and Trails	1
General information	1
Description	2
How to reach the Park	3
Car park	4
Route from the car park to the entrance	5
Description of the Park and the internal routes	6
Bar/restaurant	9
Toilets	10
Medical practices/healthcare facilities	11

Project carried out with the contribution of the





Description

Cava Valsora is a marble quarry in the **Municipality of Massa**. It is located in Via dei Colli, just before the Passo del Vestito, in the Apuan Alps.

In this mining site, surrounded by wonderful nature, a small and green lake has formed, immersed in the high vertical walls of striped marble.

Here, over time, the **Apuan Alpine Newt**, a small amphibian belonging to the salamander family, has made its home.

In addition, on the seabed, the presence of **Chara Algae has been discovered**, a very rare plant species, which lived about 500 years ago. The **Valsora Quarry and the Biolake** are privately owned and can **only be visited by reservation**.

Possibility of organizing events:

Visits with environmental guides for groups;

Guided tours for schools;

Events, live shows, dinners, photo shoots and video shoots.

General information

Opening and closing period	All year round
Times	By reservation only
Ticket cost	Full price: 8,00 € Up to 14 years: Free admission (accompanied by at least one adult) Reduced 14-18 years: €5.00 Round-trip pick up admission: €15.00 Tour inside the upper quarry: 25,00 €
Online purchase	NO





How to reach the Park



By car	Cava Valsora can be reached from all major cities in the region. Driving along the A12, the motorway that connects Genoa to Rome, you need to exit at the Massa tollbooth. It is advisable to set the navigator to "kiosk of Cava Valsora" or to "Passo del Vestito" to reach the correct point of Via dei Colli where the quarry is located. Once you arrive in the city of Massa, to reach the Quarry, you will have to travel, approximately, another 20 km on a mountain road, with curves and hairpin bends. In the indicated section, about halfway along the route, you will meet the village of Antona, from there to the final destination you will have to continue for another 10 km or so. Before the Passo del Vestito tunnel, on the left, you will see the sign of Cava Valsora, the parking lot and the kiosk for aperitifs with platters, sandwiches, focaccia and good wine.
By plane	Pisa airport at 74 km about 1 hour and 10 minutes by car.
Assistance service for people with disabilities	YES
Embarkation/disembarkation of passengers with reduced mobility	with courtesy chair and ambulift /Finger
Tactile paths for the blind and visually impaired	YES
There is a toilet room accessible with grab handles	YES
By train	
Nearest station	Massa Centro 22 km away





Assistance service for people with disabilities	YES
Blue Hall Reference	Location Florence
Carriage access	with forklift/ramp
There is a toilet room in the station accessible with grab handles	YES
By public transport	At the moment there are no suburban buses serving the area.
Eventual notes	

Car park

Public parking nearby	YES
Type of public parking floor	Gravel
Presence of parking space reserved for people with disabilities	NO
Electric charging stations	NO
Eventual notes	
	







Route from the car park to the entrance

Route from the car park to the starting point	The parking lot is adjacent to the kiosk, but the gravel path, with various differences in height especially in the initial part that forms a hollow, does not allow the person with disabilities in a wheelchair to move independently and, even the companion, may have difficulty pushing the wheelchair.
Distance from parking to entrance	adjacent
Type of trail surface	Coarse and lightly beaten gravel
There are indicators and tactile maps	NO
Eventual notes	





Description of the Park and the internal routes

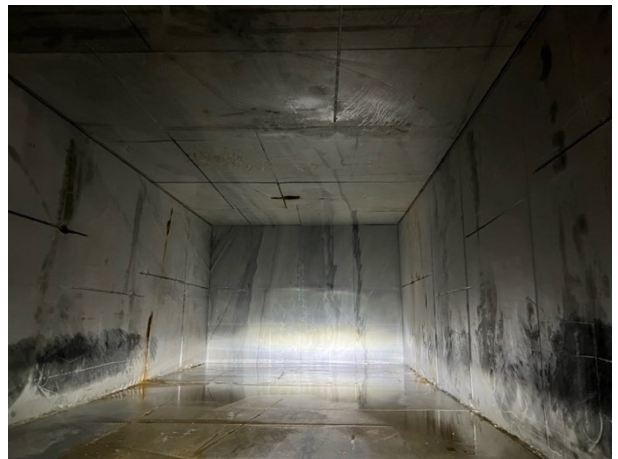
<p>Length</p>	<p>900 meters of dirt road, on gravel with high differences in height and 100 m of flat wooden walkway</p>
<p>In the internal paths and paths there are maps and tactile signs for the blind</p>	<p>NO</p>
<p>Route description</p>  	<p>The path to reach the Biolake, starting from the kiosk, adjacent to the parking lot, is 900 meters long, of dirt road, with coarse gravel, completely inaccessible to wheelchairs, manual, electric and engines. In addition to the impervious pavement, also subject to climate change, the slopes are truly significant.</p> <p>For this reason there is the possibility, for everyone, but especially for people with disabilities in wheelchairs, with a good autonomy, to use, for a fee, a pick-up, to reach the Quarry and the Biolake.</p> <p>It is advisable to get on the pik up directly from the car park. Access to the pickup is not suitable for everyone, due to its height, you need a good autonomy to be able to hold on to the handle and the push of a companion.</p> <p>Once you have reached the vehicle, at the end of the path, a walkway with smooth, wooden, flat pavement will lead you to the Biolake. The quarry, on the other hand, is located on an intermediate floor, but can only be visited with the paid tour.</p>



Project promoted by



Regione Toscana



Project carried out with the contribution of the

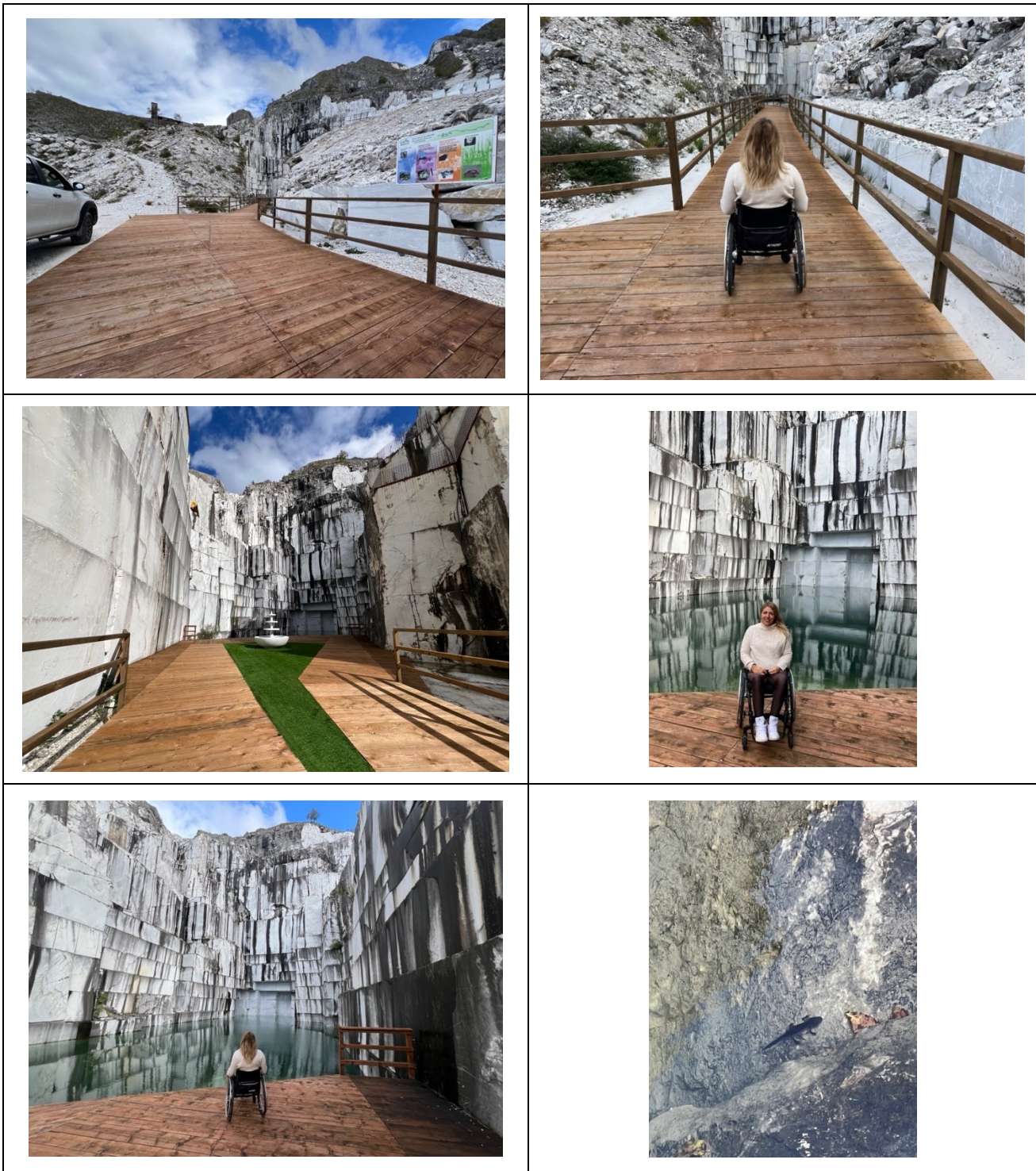


Presidenza del
Consiglio dei Ministri
Ministro per la disabilità

Project promoted by



Regione Toscana



Project carried out with the contribution of the



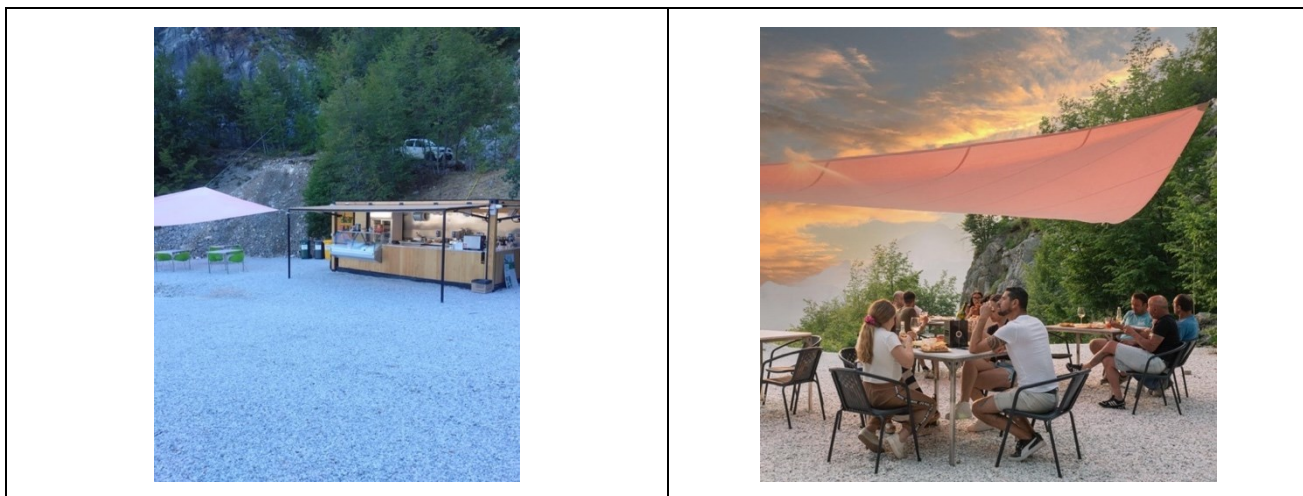
Presidenza del
Consiglio dei Ministri
Ministro per la disabilità



Bar/restaurant

Type of venue	Snack bar
How to access the premises	On gravel, coarse, little beaten with several differences in height for which the help of a good guide is necessary.
Useful width of door/entrance gate	Outdoors
Bar counter	Above 100 cm
Types of tables	4-shank
Space under floor tables	With space underneath useful for approaching the wheelchair
Availability of high chairs for babies	NO
Multilingual menu	NO
Large print menus	NO
Braille menu	NO
Table service for people with disabilities	YES
Availability of dedicated kitchens/separate dishes for celiacs/food intolerant	NO
Availability of foods for celiacs	No foods for celiacs are available, only platters of cold cuts and cheeses
A fully equipped baby feeding service is available	NO
Eventual notes	





Toilets

Location of the toilet room	Next to the kiosk
How to access the premises	A step with a height of >10 cm for which the help of a companion is required
Usable width of the entrance door	Above 80 cm
Type of door	with door that can be opened outwards
Type of handle	lever
Toilet height	50 cm
Toilet seat with open front tooth	YES
Support handles	to the right of the toilet
Flexible shower on the side of the toilet	NO
Washbasin with space underneath for wheelchair approach	sufficient
Height from the ground lower edge mirror	not sufficient for use by a person in a wheelchair
Baby changing table	NO
Eventual notes	





Medical practices/healthcare facilities

Hospitals near the property	Nuovo Ospedale Apuane Via Enrico Mattei, 21, 54100 Marina di Massa MS
Other healthcare facilities	Ospedale del Cuore "Gaetano Pasquinucci" Via Aurelia Sud, 54100 Massa

TESTED BY: [Handy Superabile Social Promotion Association](#) in 2024

Project carried out with the contribution of the

